



# **RISING HEIGHTS**

WHERE HEALTH MEETS WEALTH

**BUSINESS**  
PRESENTATION



# COMPANY INTRODUCTION



## VISION STATEMENT:

- + To Transform the lives of people from all nationalities across the Globe by availing the opportunity to influence their Future and Dreams

## MISSION STATEMENT:

- + Giving an opportunity to ordinary people to live their fullest potential through Health and Wealth

## ABOUT US

- + A Multi-Level Marketing company incorporated in South Africa. We provide a holistic approach of wellbeing (health & wealth).
- + Using the purest form of natural botanical ingredients to promote effective health solutions through supplements that not only provides longevity but improves the quality of life.
- + Creating a platform for people to empower themselves financially through the distribution of our products while impacting & transforming lives.
- + Providing global systems that enable everyone to make a living and/or extra income conveniently whether traditionally or online in the digital space.

# MANAGEMENT

## **KHATHUTSHELO MUKWEVHO – (CEO) & FOUNDER**

A Somatologist by profession & an entrepreneur at heart, Khathu is the driving force behind the organization.

With over 8 years experience in the Health & Beauty industry, Khathu has worked with leading brands globally that promote health & wellbeing through nutrition and good lifestyle choices.

She has made significant strides in the MLM industry as both a networker and as country director to a number of companies. This extensive experience and exposure coupled with a deep passion for people acted as a pre-emptive driver of this new exciting opportunity.

She has worked with people from all over the globe and this has taught her the skill to relate and engage with persons of different beliefs, nationalities & backgrounds, an imperative tool in the MLM and network marketing industry.

Khathu is vibrant, ambitious & driven by the ability to make an impact in people's lives through empowering them into greater heights.



**RISING HEIGHTS**  
WHERE HEALTH MEETS WEALTH

# MANAGEMENT

## RONALD GWENZI - CHIEF FINANCIAL OFFICER

Mr Ronald has over 14 years' experience in the Financial, Regulatory and Compliance Fraternity. Mr Ronald has been a candidate and a leading exponent in various institutes like the Chartered Financial Analyst Institute, an associate with the Institute of Bankers Management South Africa, a part of the South African Institute of Financial Markets, Moonstone compliance and various other institutes which focus on buttressing official Regulatory or Compliance structures.

Ronald has spent many passionate years delving in the work of financial modelling, poverty alleviation models

With an entrepreneurial spirit and a desire to give back, he is a great believer that transformation begins with oneself and that under the right circumstances there are no limitations to what one can achieve.



**RISING HEIGHTS**  
WHERE HEALTH MEETS WEALTH

# MANAGEMENT

## LULAMA “LULU” MUTSIKIRA - CHIEF MARKETING OFFICER

Lulu Mutsikira owns and manages several successfully run entities in the marketing, design, and women development space. She has ten years of experience working alongside some of the world's top and reputable companies and clients in a variety of industries; including British American Tobacco and South African Breweries.

Lulu is a powerful force that uses her positive attitude and tireless energy to encourage and champion for the actualisation and excellence of the African woman, while also providing long-term employment for them in her entities.

A GIBS Future Leaders Programme alumnus, Lulu holds a BCOM Honours in Marketing, a qualification in Interior design from the JD school of London and a Red & Yellow Digital Marketing qualification from the University of Stellenbosch Business School.



**RISING HEIGHTS**  
WHERE HEALTH MEETS WEALTH

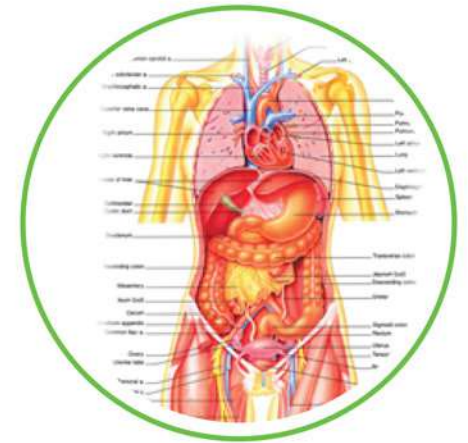
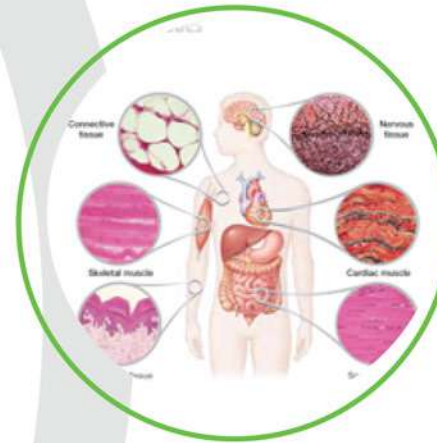
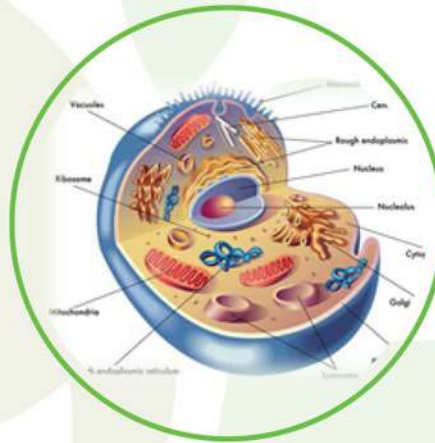
# Health & Wellness

The background features a large, faint, light green circular graphic on the left and a dark grey circular arc on the right. Several green leaves of various shades (light green, medium green, and dark green) are scattered across the composition, some overlapping the circular elements. A small, solid dark green circle is positioned near the center-right, between the dark grey arc and the green leaves.

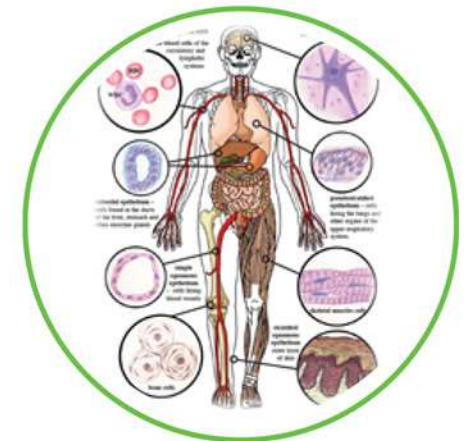
# THE HUMAN BODY IS BUILT ON CELLS!



**RISING HEIGHTS**  
WHERE HEALTH MEETS WEALTH



- + THE HUMAN BODY IS BUILT ON CELLS
- + CELLS FORM TISSUES
- + TISSUES THEREFORE FORM ORGANS
- + ORGANS FORM THE HUMAN SYSTEMS
- + THEN THE HUMAN SYSTEMS MAKE UP THE HUMAN BODY

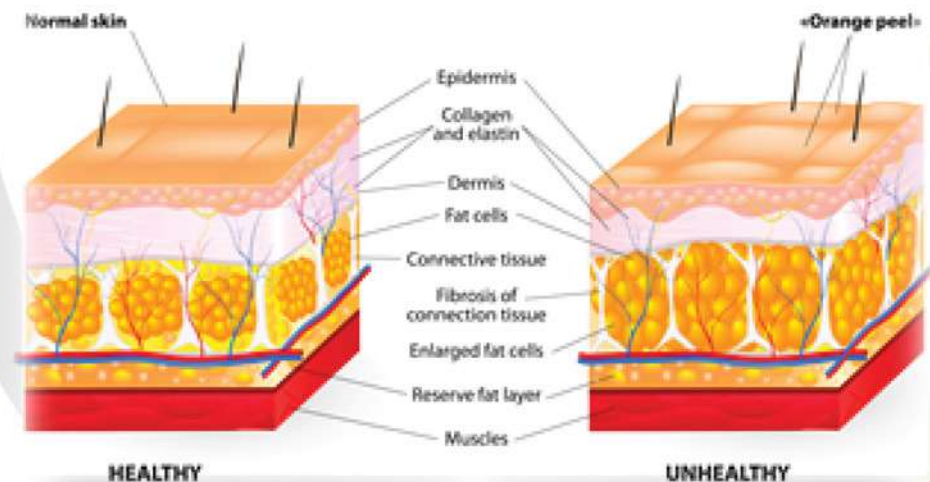


# CONCERNS

- + Cellulite
- + Stubborn weight
- + Skin problems
- + Constipation
- + Muscle pains
- + Flabby arms
- + Bloating
- + Saggy skin
- + Poor Circulation
- + Headache



## THE FORMATION OF CELLULITE



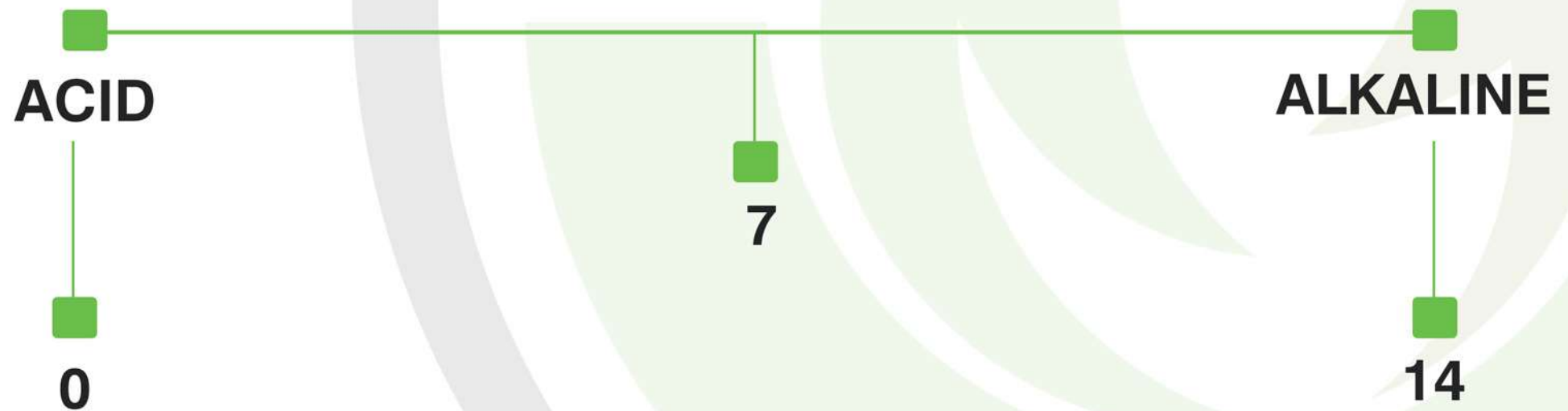
# TOXINS

## CAUSES

- + Parabens
- + Heredity
- + Fatty food
- + Smoking
- + Lactic Acid
- + Pollution
- + Preservatives
- + Stress
- + Alcohol

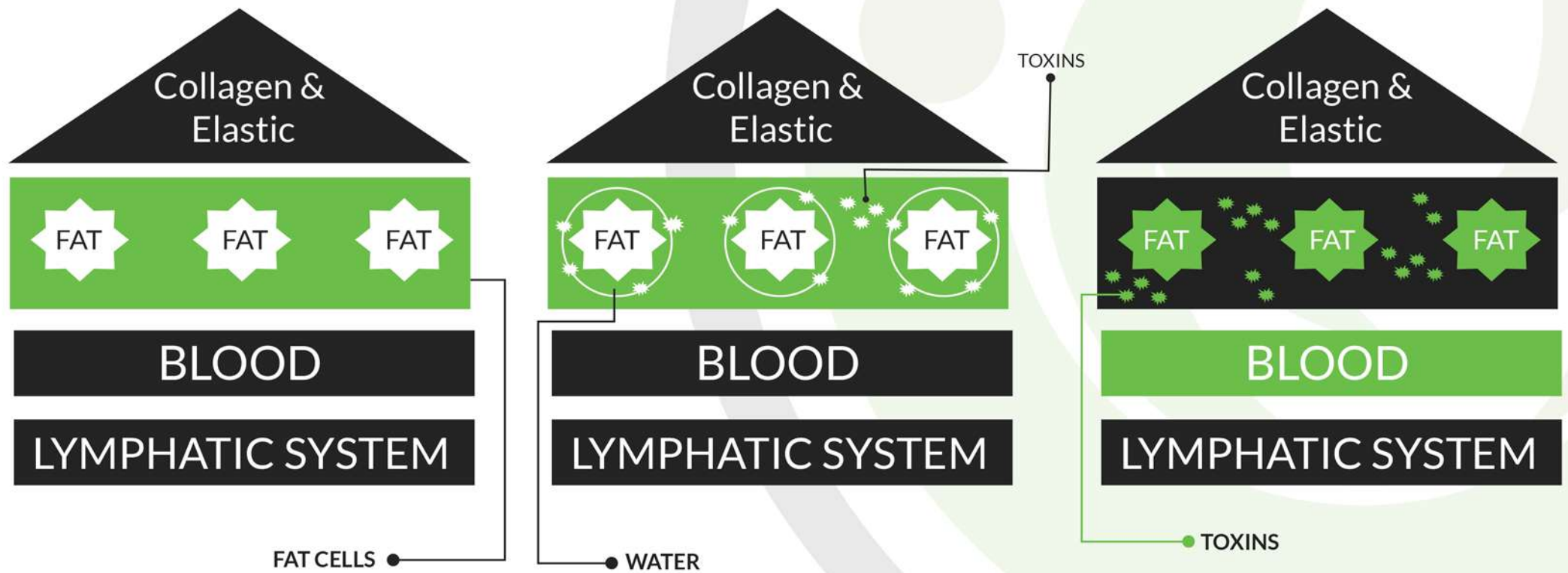


# PH SCALE DRAWING

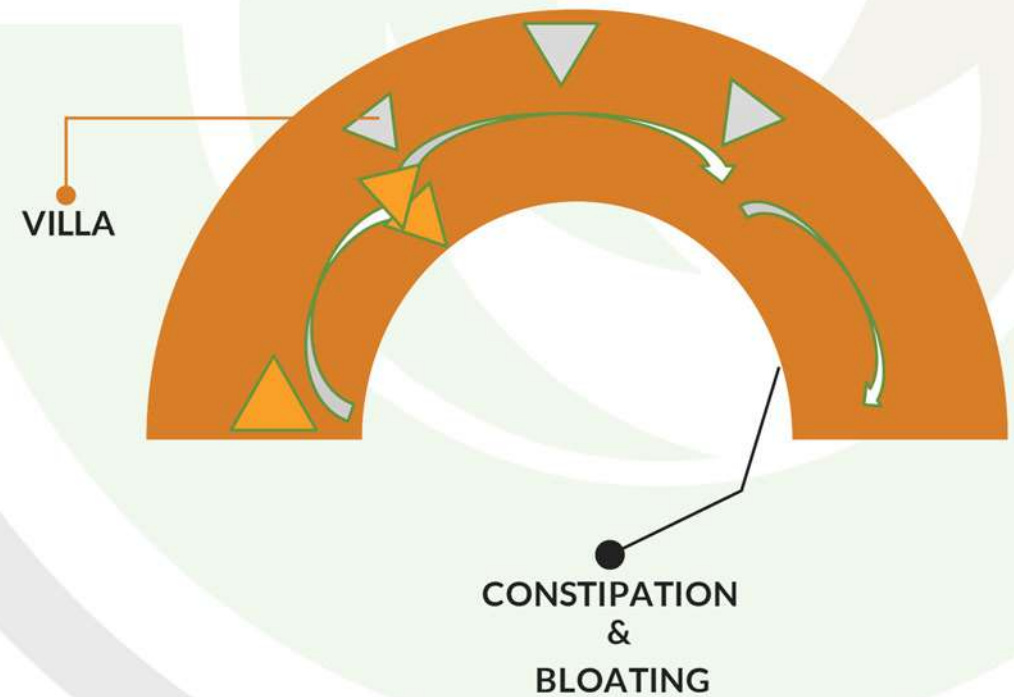
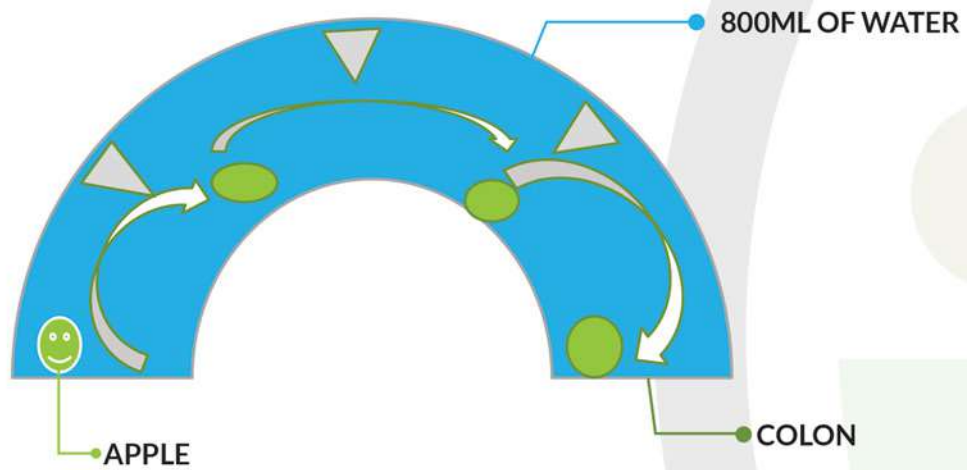


# BODY DIAGRAM

## +SKIN (ROOF)



# COLON DIAGRAM 1 (APPLE)



**RISING HEIGHTS**  
WHERE HEALTH MEETS WEALTH



# **OUR PRODUCT OFFERING/ SOLUTIONS**



**RISING HEIGHTS**  
WHERE HEALTH MEETS WEALTH

# 2Cell+ *2in1 Stermcell*



Cell renewal | Cell Regeneration | Eye Health  
Stroke Reduction | Heart Diseases Control  
Cancer Control | Anti - Ageing/Collagen

## **Benefits of 2Cell+**

- + Repairs Damaged Tissue
- + Reduces Night Blindness
- + Skin Brightening Effect
- + Stress Management
- + Helps with Skin Infection & Many more



**RISING HEIGHTS**  
WHERE HEALTH MEETS WEALTH



# BeanPure

## *Slimming Coffee*

Weight loss management | Diabetes Control  
High Blood Pressure management  
Cholesterol | Insomnia Management

- + Lowers Cholesterol
- + Regulates Blood Pressure
- + Controls Insulin Spikes
- + Regulates Blood Sugar
- + Support Colon Detoxification
- + Energy Booster
- + High Omega 3 Fatty Acids
- Supplies body with High Quality Proteins

# Coming Soon



- + ToxPure - Detox
- + NutriPure - Immune Booster
- + DermPure - Anti-inflammatory
- + SlimPure - Meal Replacement Shake
- + FemPure - Women's Health
- + SparkPure - Men's Health

The background features a stylized graphic of green leaves and a dark grey circular arc. The leaves are in various shades of green and are arranged in a way that suggests growth or a natural cycle. The dark grey arc is a thick, curved line that spans across the upper right portion of the image.

# **COMPENSATION PLAN**

# 10 WAYS OF EARNING



**RISING HEIGHTS**  
WHERE HEALTH MEETS WEALTH

- + **Sponsorship Bonus**
- + **Upgrade Bonus**
- + **Binary Bonus**
- + **Team Building Bonus**
- + **ROI Bonus**
- + **Residual Bonus**
- + **Binary on Residual Bonus**
- + **Retail Profit**
- + **Rank Advancement Bonus**
- + **Stockist Commission**



**Our compensation plan has been approved by at least 3 Actuarial Scientists for its sustainability**

# PACKAGES

## FAST START EAGLE

1 PRODUCT (40PV)

**\$55**

## BLACK EAGLE

2 PRODUCTS (80PV)

**\$110**

## GOLDEN EAGLE

8 PRODUCTS (320PV)

**\$440**

## CROWNED EAGLE

20 PRODUCTS (800PV)

**\$1100**

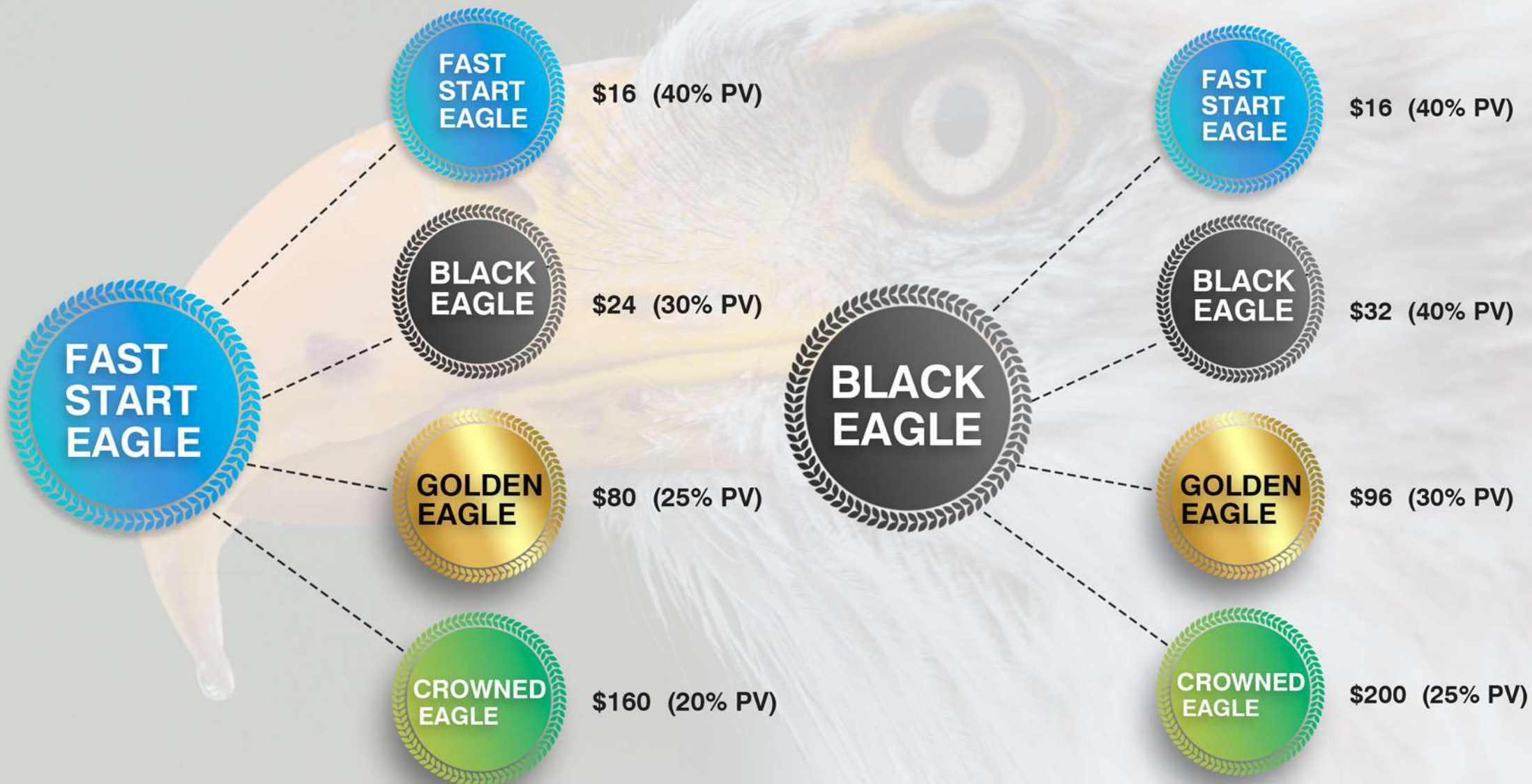


**RIISING HEIGHTS**  
WHERE HEALTH MEETS WEALTH

# SPONSORSHIP BONUS (20 - 40%)



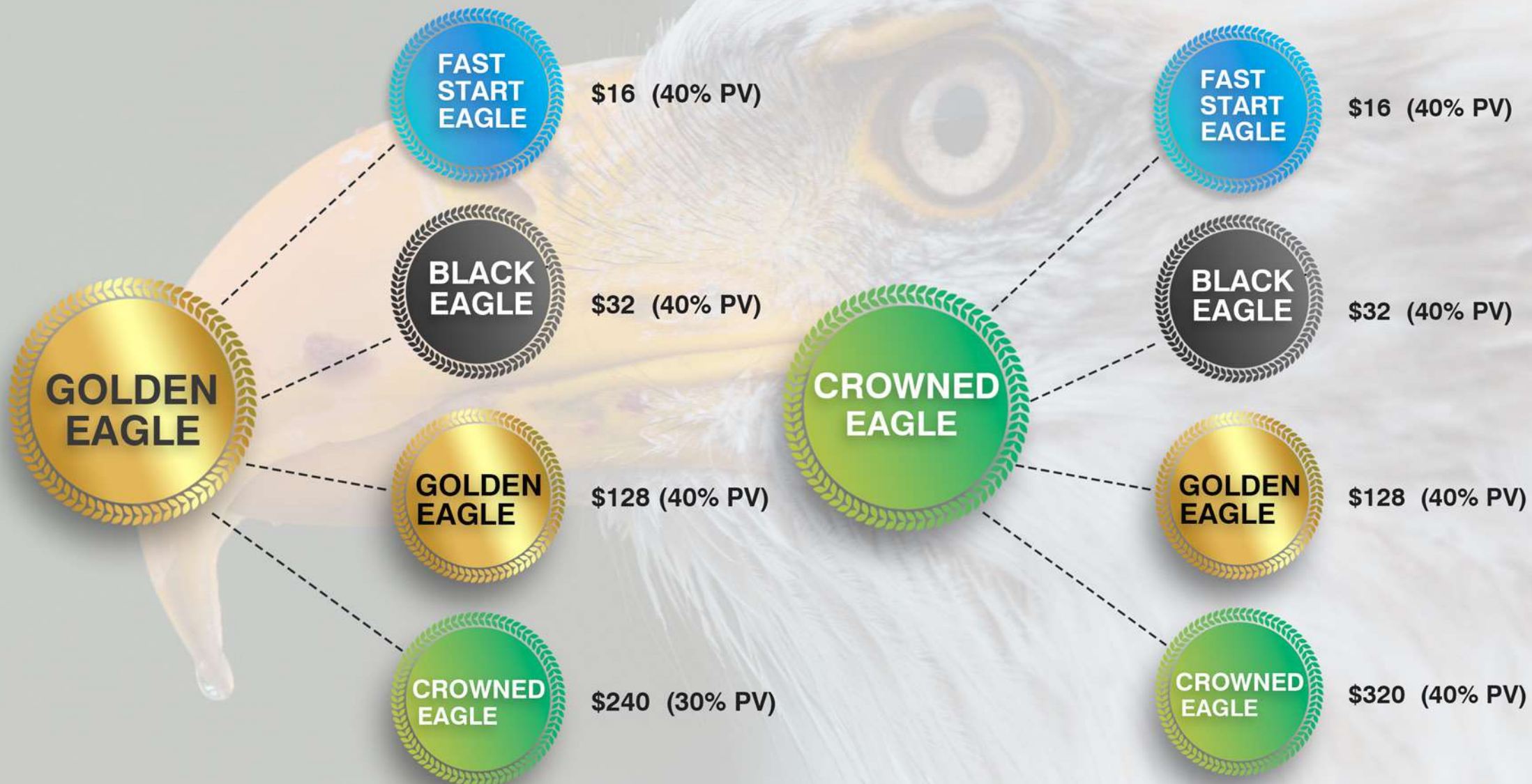
**RISING HEIGHTS**  
WHERE HEALTH MEETS WEALTH



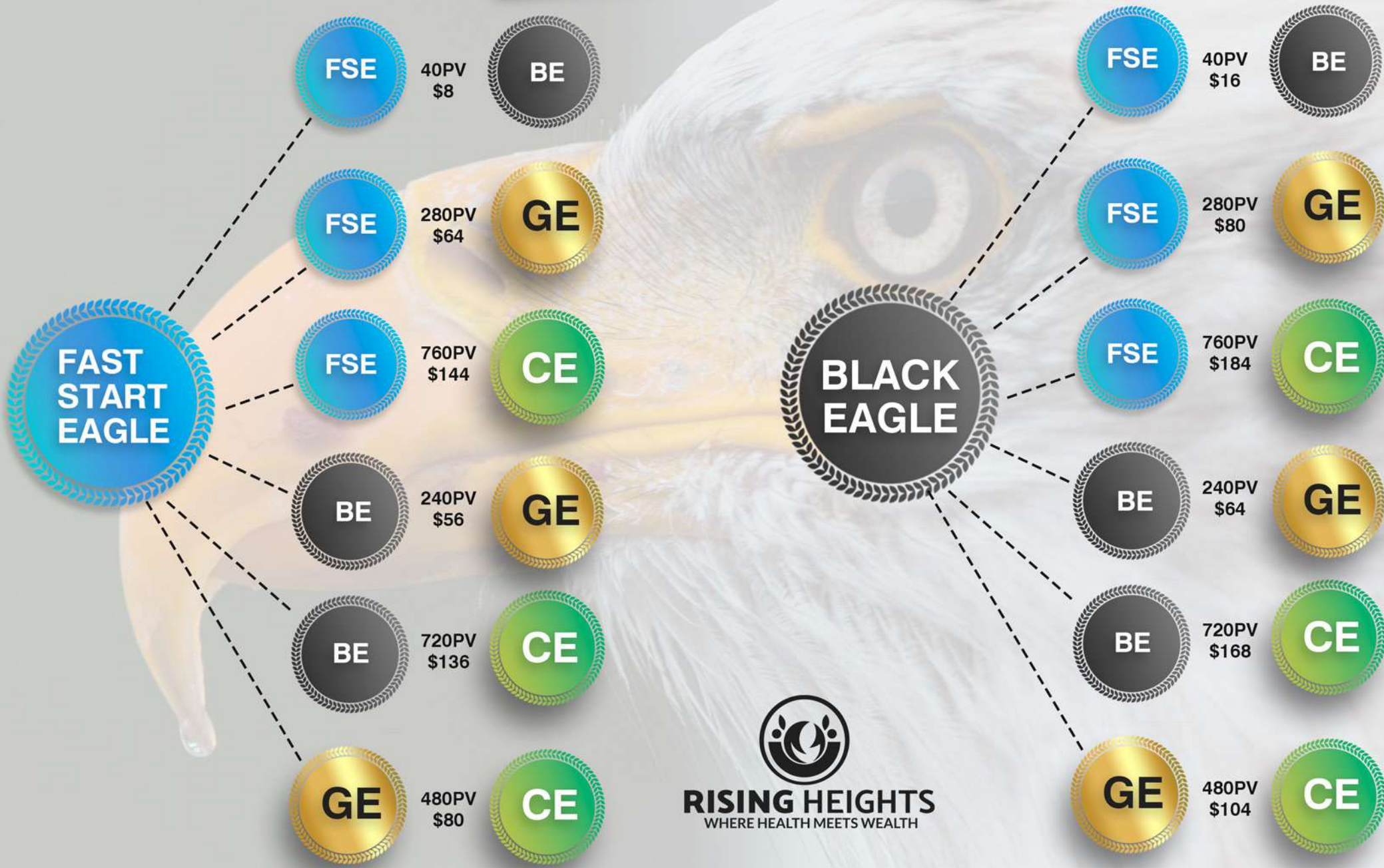
# SPONSORSHIP BONUS (20 - 40%)



**RISING HEIGHTS**  
WHERE HEALTH MEETS WEALTH

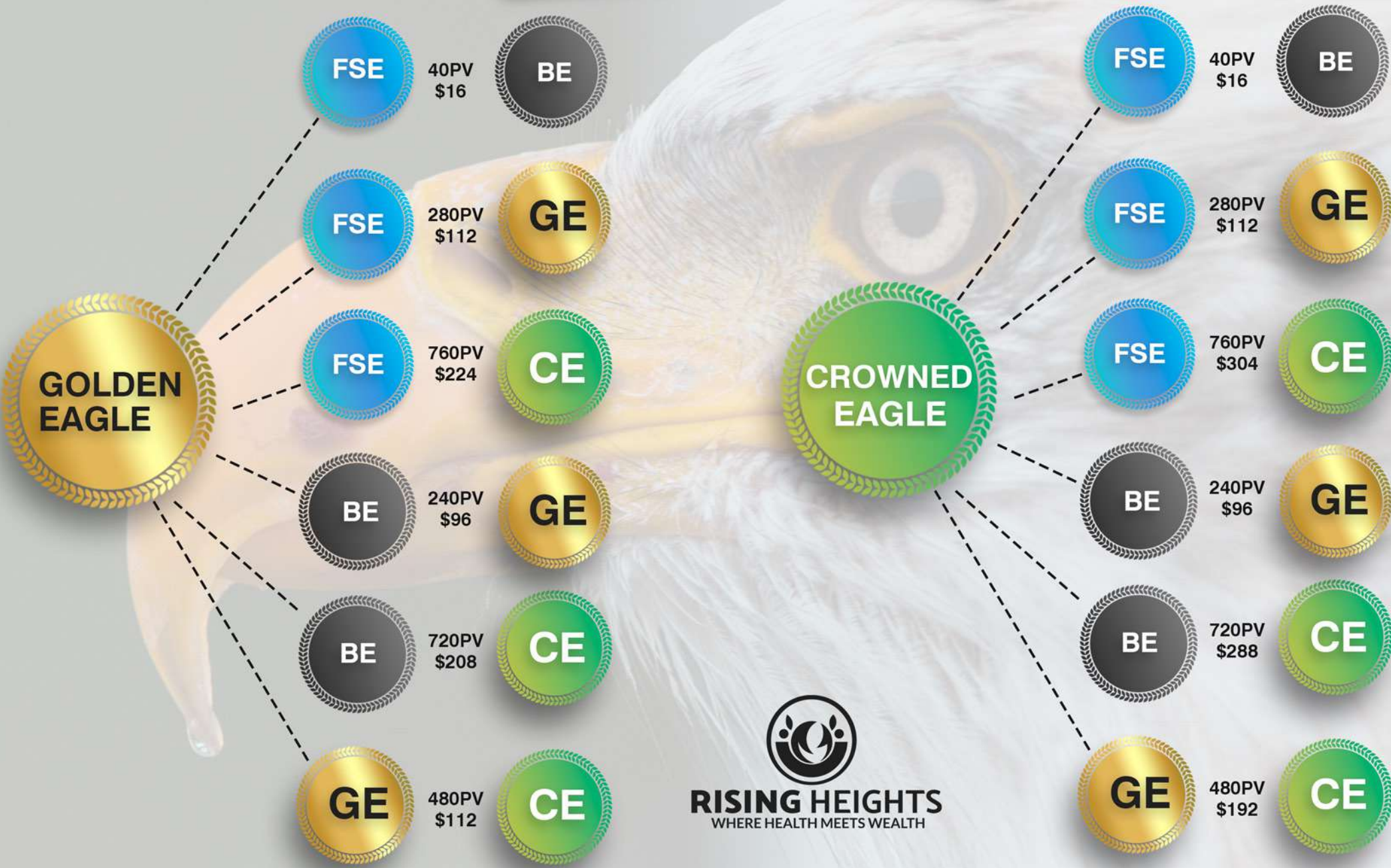


# UPGRADE BONUS



**RIISING HEIGHTS**  
WHERE HEALTH MEETS WEALTH

# UPGRADE BONUS



**RIISING HEIGHTS**  
WHERE HEALTH MEETS WEALTH

# BINARY BONUS (8-15%)

## FAST START EAGLE

800PV    1600PV  
8%  
\$64    800PV

## BLACK EAGLE

800PV    1600PV  
10%  
\$80    800PV

## GOLDEN EAGLE

800PV    1600PV  
12%  
\$96    800PV

## CROWNED EAGLE

800PV    800PV  
15%  
\$120    800PV

- + 8-15% Paid on weaker leg
- + No daily capping
- + No monthly capping
- + Infinite paring payout
- + Spillover PV's count
- + Sponsor 1 left & 1 right to unlock binary bonus



**RIISING HEIGHTS**  
WHERE HEALTH MEETS WEALTH

# TEAM BUILDING BONUS



**RISING HEIGHTS**  
WHERE HEALTH MEETS WEALTH

**FAST START  
EAGLE**

**5%**

**BLACK  
EAGLE**

**5%**

**GOLDEN  
EAGLE**

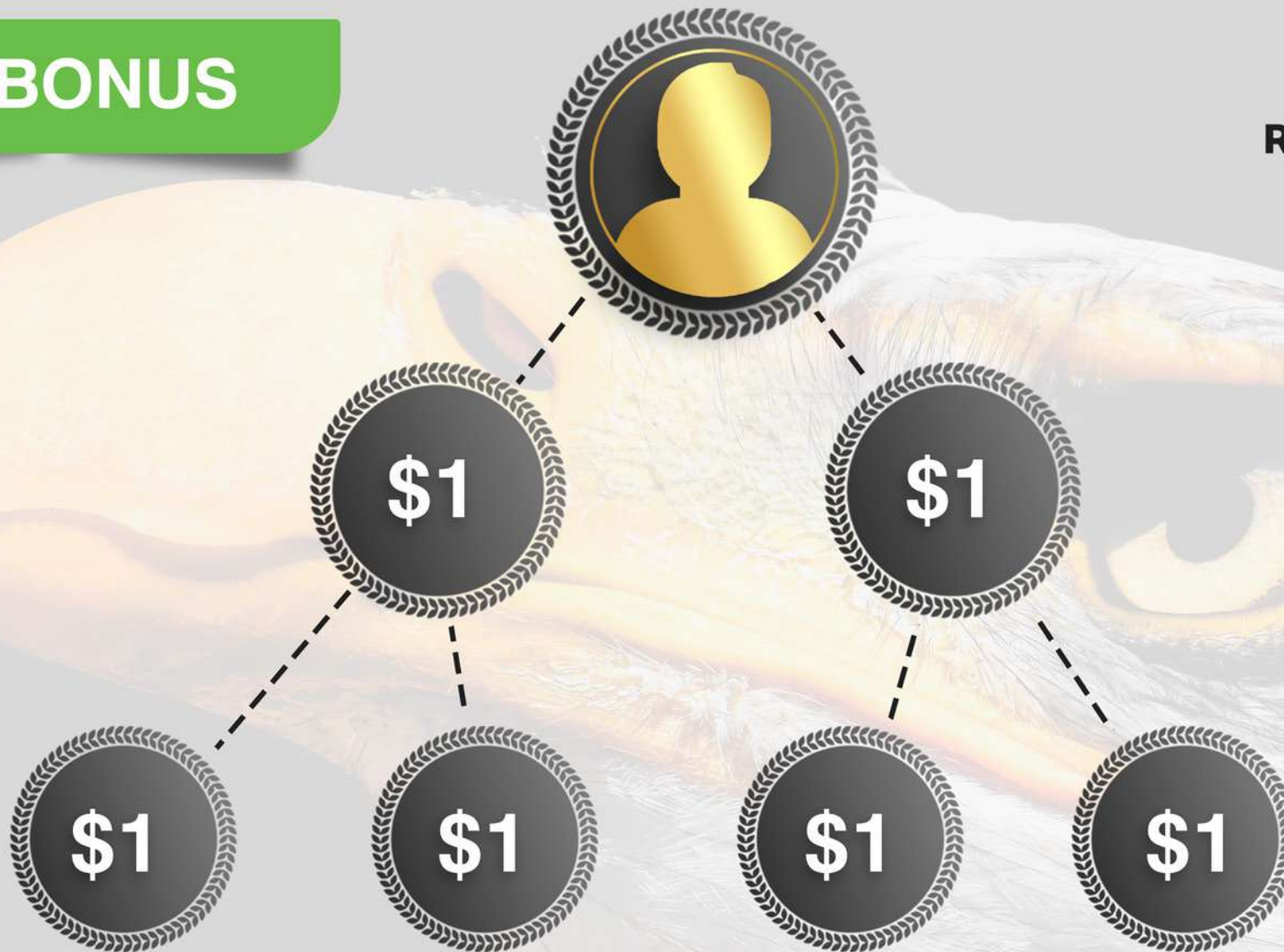
**7%**

**CROWNED  
EAGLE**

**10%**

➤ **Earn a percentage  
of all your directly  
sponsored Binary  
Bonus**

# ROI BONUS



- + Company will pay you USD1 for every person in your tree until you reach your initial Capital (Upgrades do not count)
- + This will accumulate and once you have reached your Initial Capital, your ROI will be unlocked
- + ROI Bonus can only be used to redeem products of your choice

# FAST START EAGLE SCENARIO



**RISING HEIGHTS**  
WHERE HEALTH MEETS WEALTH

Initial Capital: \$55

Sponsor Bonus x2 = \$32

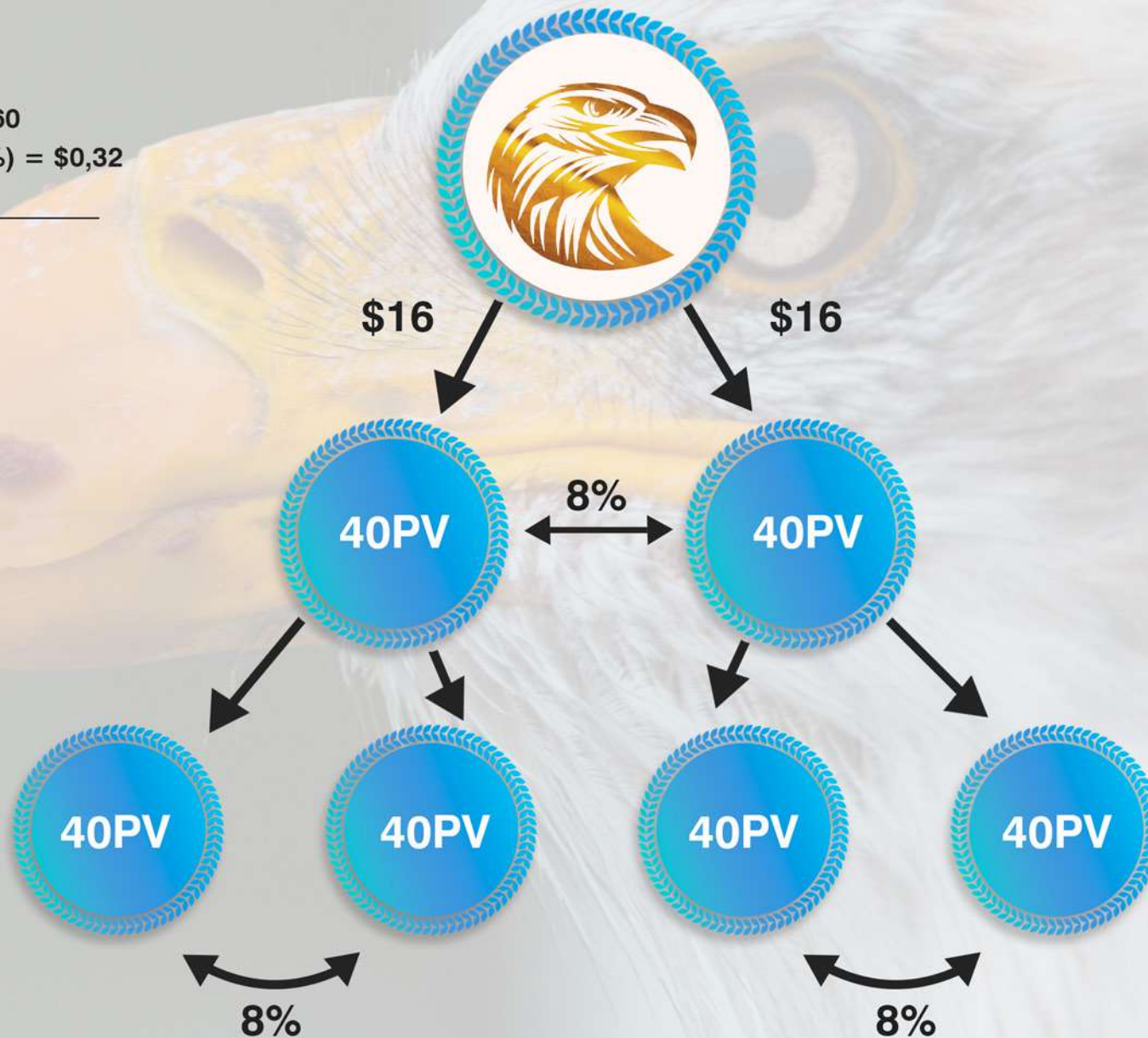
Binary Bonus (8%) = \$9,60

Team Building Bonus (5%) = \$0,32

ROI Bonus = \$6

---

Total = \$47,92



# BLACK EAGLE SCENARIO



**RISING HEIGHTS**  
WHERE HEALTH MEETS WEALTH

**Initial Capital: \$110**

Sponsor Bonus x2 = \$64

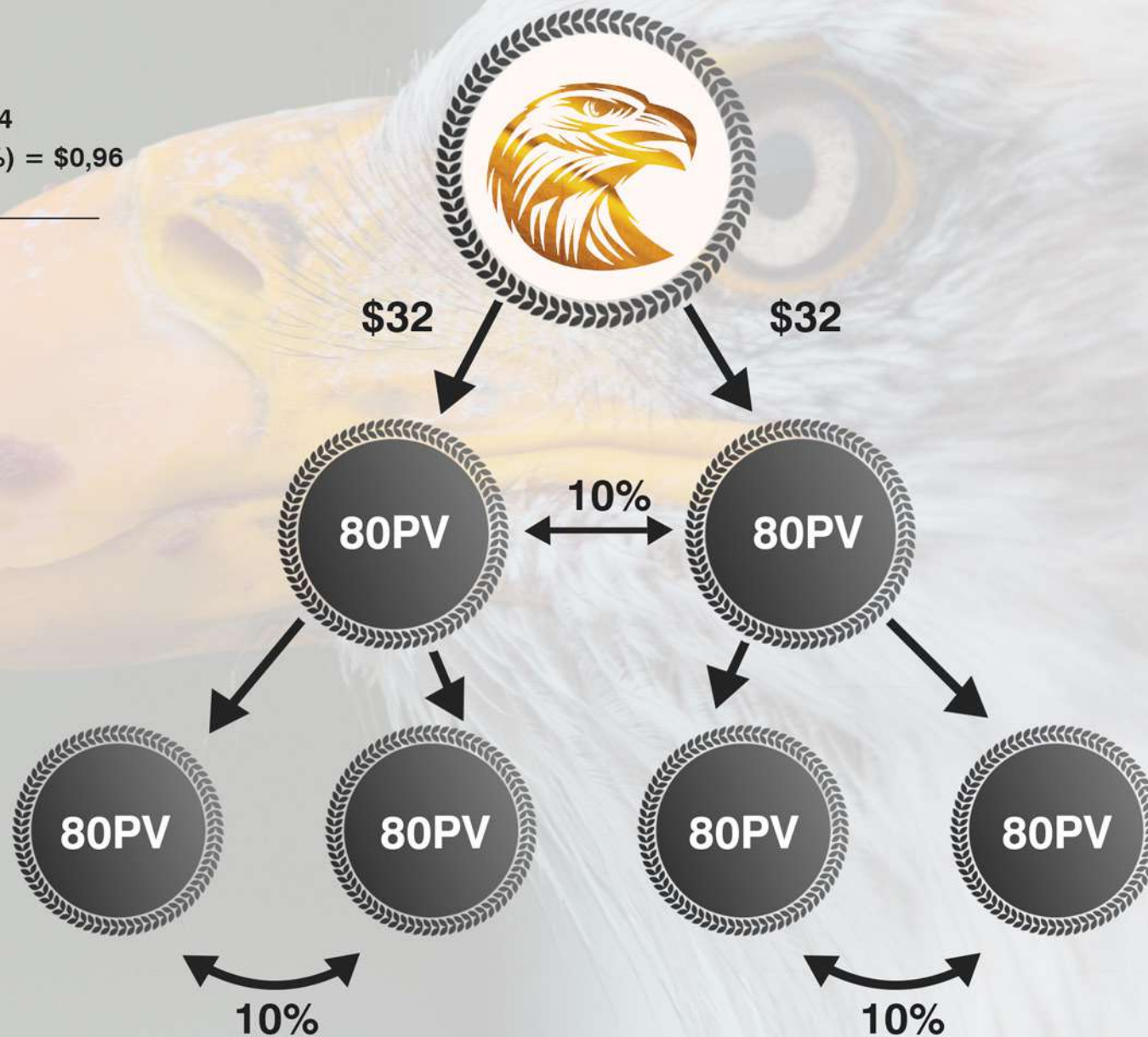
Binary Bonus (10%) = \$24

Team Building Bonus (5%) = \$0,96

ROI Bonus = \$6

---

**Total = \$94,96**



# GOLDEN EAGLE SCENARIO



**RISING HEIGHTS**  
WHERE HEALTH MEETS WEALTH

**Initial Capital: \$440**

**Sponsor Bonus x2 = \$256**

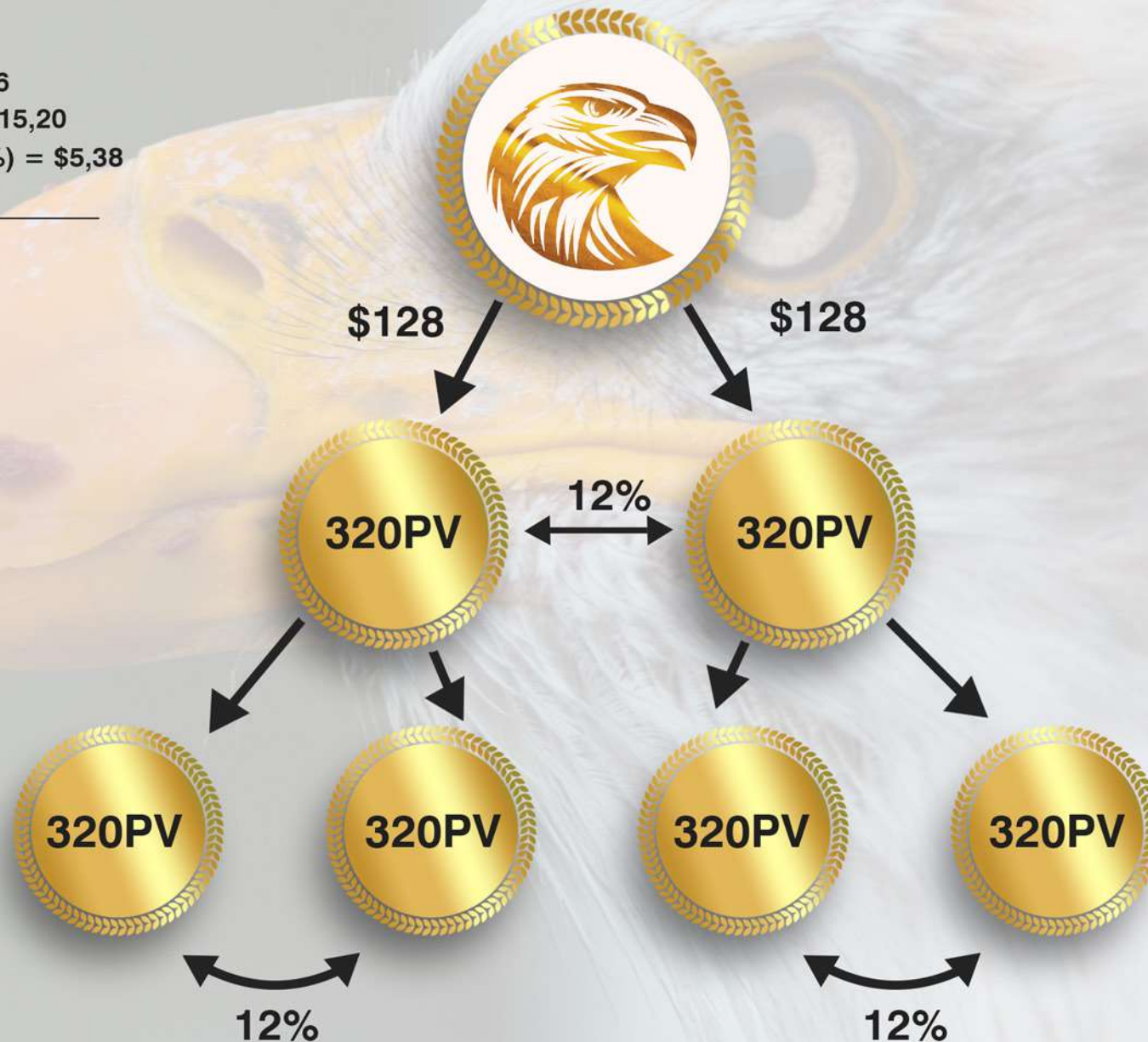
**Binary Bonus (12%) = \$115,20**

**Team Building Bonus (7%) = \$5,38**

**ROI Bonus = \$6**

---

**Total = \$382,58**



# CROWNED EAGLE SCENARIO



**RISING HEIGHTS**  
WHERE HEALTH MEETS WEALTH

**Initial Capital: \$1100**

**Sponsor Bonus x2 = \$640**

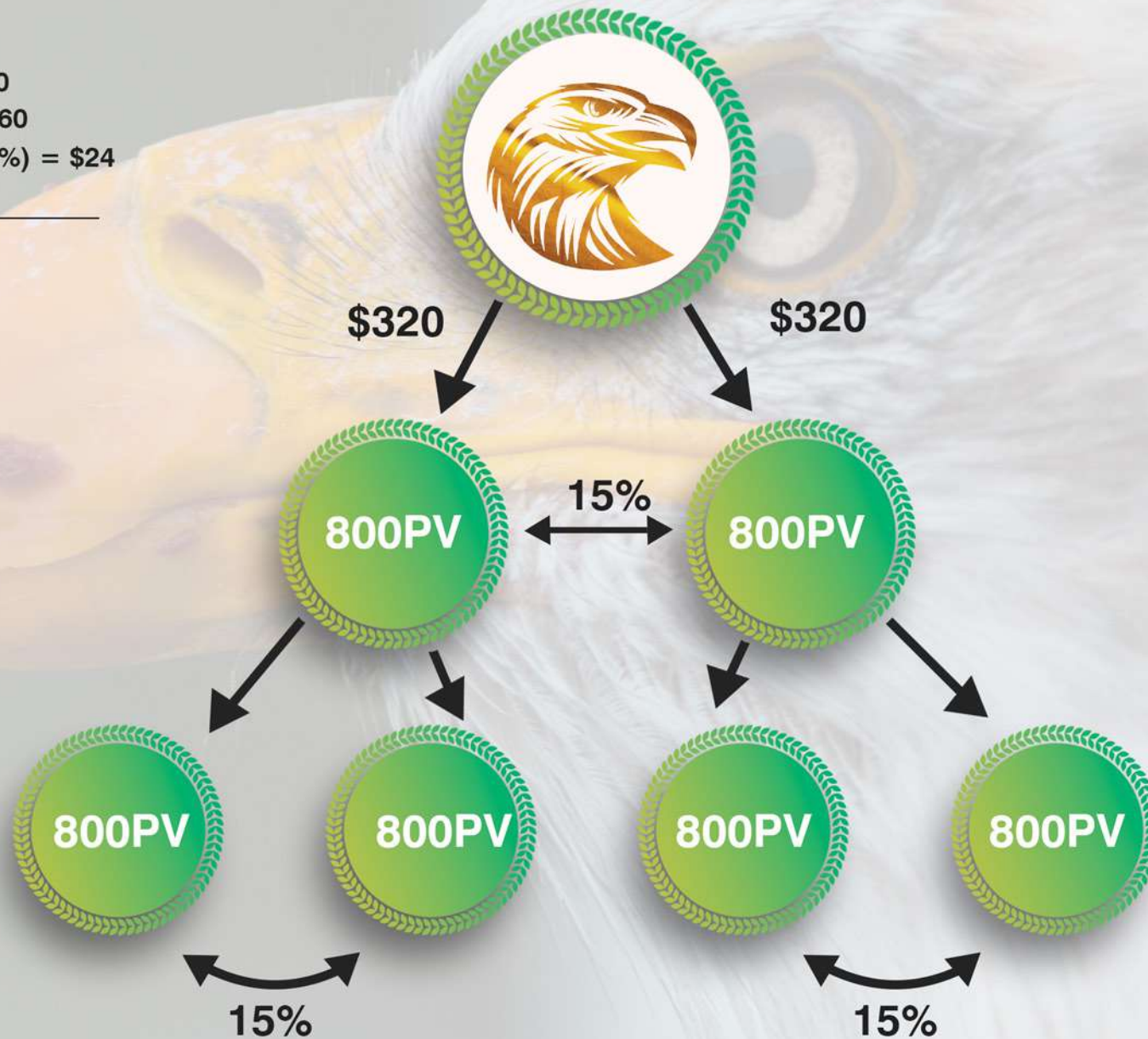
**Binary Bonus (15%) = \$360**

**Team Building Bonus (10%) = \$24**

**ROI Bonus = \$6**

---

**Total = \$1030**



# RESIDUAL INCOME BONUS:



GENERATIONS:	PERCENTAGE:
1 <sup>ST</sup>	4%
2 <sup>ND</sup>	3%
3 <sup>RD</sup>	2%
4 <sup>TH</sup>	2%
5 <sup>TH</sup>	1%
6 <sup>TH</sup>	1%
7 <sup>TH</sup>	2%
8 <sup>TH</sup>	2%
9 <sup>TH</sup>	3%
10 <sup>TH</sup>	4%

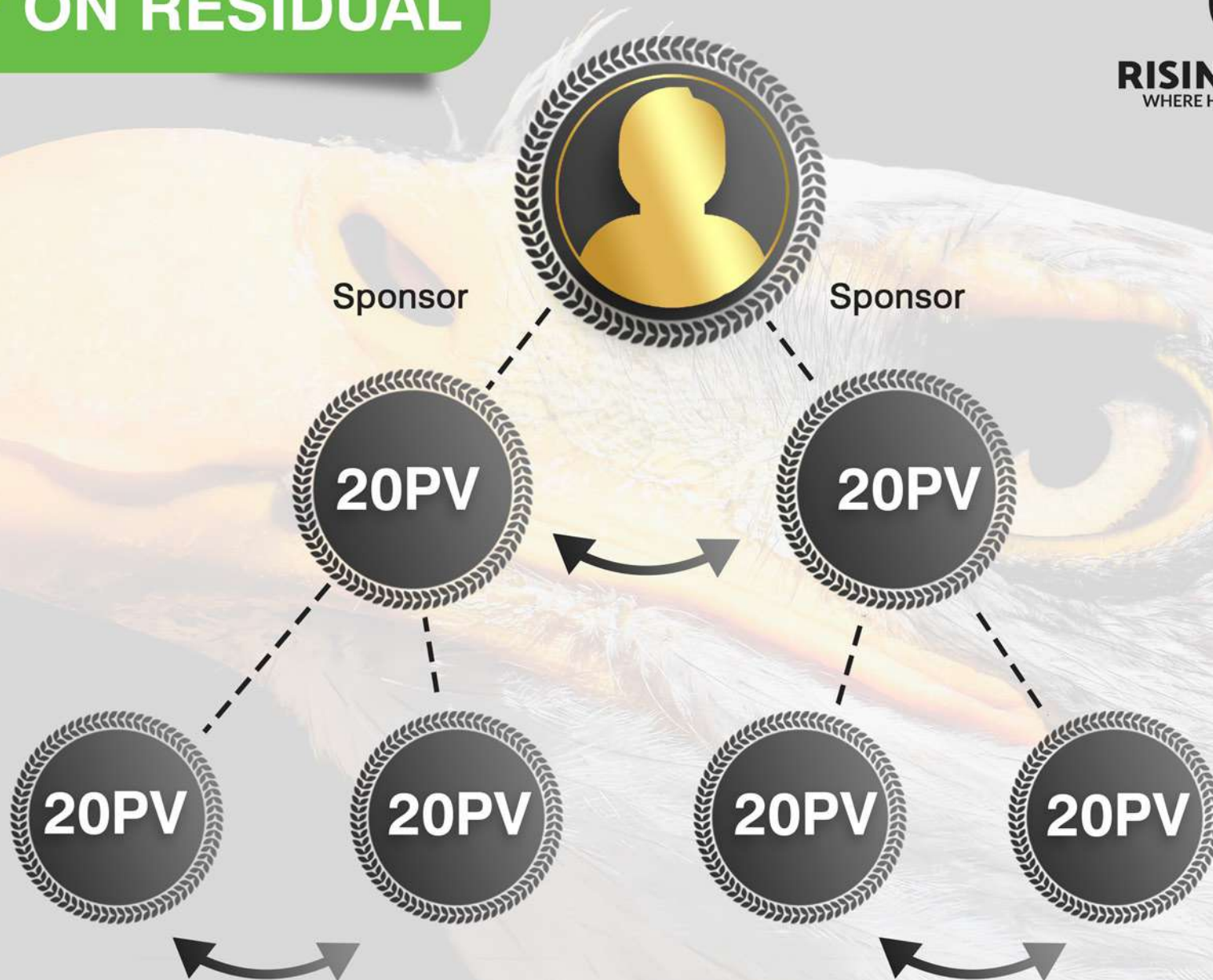
## Terms & conditions:

- Sponsor at least 1 Left & 1 Right
- Compressed Levels
- You need minimum personal sales of **20PV**
- Paid out monthly
- Calculated on the first day of the following month.

# BINARY ON RESIDUAL



**RISING HEIGHTS**  
WHERE HEALTH MEETS WEALTH



+ Binary % determined by sponsor packages

# RANK ADVANCEMENT BONUS



**RISING EAGLE**  
2 000PV | 2 000PV  
1 MONTH  
**\$60**



**RISING EAGLE**  
6 000PV | 6 000PV  
2 MONTHS  
**\$120**



**RISING EAGLE**  
15 000PV | 15 000PV  
3 MONTHS  
**\$270**



**RISING EAGLE**  
30 000PV | 30 000PV  
4 MONTHS  
**\$450**



- 1 calendar month, calculated on a 30-day period
- Distributor must meet all requirements to qualify for incentive.
- Distributor can only qualify for each incentive once.

- After 18 months incentives start again.
- Sponsor at least 320PV in each rank to rank up.

# RANK ADVANCEMENT BONUS



**FLYING EAGLE**

50 000PV | 50 000PV

5 MONTHS

**\$600**

CELLPHONE INCENTIVE



**FLYING EAGLE**

100 000PV | 100 000PV

6 MONTHS

**\$1,500**

LAPTOP INCENTIVE



**FLYING EAGLE**

100 000PV | 100 000PV

8 MONTHS

**\$4,500**

MINI CAR INCENTIVE



**FLYING EAGLE**

500 000PV | 500 000PV

10 MONTHS

**\$7,500**

CAR INCENTIVE



- 1 calendar month, calculated on a 30-day period
- Distributor must meet all requirements to qualify for incentive.
- Distributor can only qualify for each incentive once.

- After 18 months incentives start again.
- Sponsor at least 320PV in each rank to rank up.

T&C's apply

# RANK ADVANCEMENT BONUS



## SOARING EAGLE

1 000 000PV | 1 000 000

14 MONTHS

**\$15 000**

LUXURY CAR INCENTIVE



## SOARING EAGLE

2 000 000PV | 2 000 000

18 MONTHS

**\$30 000**

HOUSE INCENTIVE



- 1 calendar month, calculated on a 30-day period
- Distributor must meet all requirements to qualify for incentive.
- Distributor can only qualify for each incentive once.

- After 18 months incentives start again.
- Sponsor at least 320PV in each rank to rank up.

# RETAIL PROFIT:

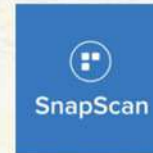


- Members get 30-50% discount on products
- These products can be sold at retail price to make profit

# WHY PARTNER WITH US

- 100% Earnings paid out to distributors - No deductions of points/Gift Points.
- Daily Earnings
- Weekly Pay-outs
- Safe & convenient payment gates
- Android & IOS App

## Our Payment Partners:



## Our Shipping Partners:



## RISING HEIGHTS BUSINESS ACCELERATOR:

- Get access to funding & compensation when hosting presentations
- Become a certified presenter of choice in your area
- Get fully trained & equipped with knowledge to be a presenter
- Trainings to include (but not limited to)
  1. Soft Skills
  2. Personal Development
  3. Business Development
  4. Anatomy
  5. Our Products
  6. Compensation Plan





# QUESTION & ANSWERS



THANK  
YOU



**RISING HEIGHTS**  
WHERE HEALTH MEETS WEALTH